

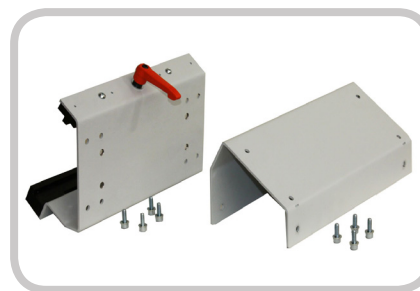
Base stand with storage troughs for PRO-TWIST-BASIC



- Base stand with storage troughs for twisted and non-twisted lines
- Blank holder for an easy extraction of the non-twisted wire strands to equip the device
- Exact mounting adapter for the drive side and tension side, with a quick-clamping system to adjust the tension side to the different lengths of wire strands, which need to be twisted, quickly and without tools
- Base stand can also be adapted for use with already existing devices by means of a conversion kit



Pneumatic tensioning carriage



Device adapter for Pro-Twist-Basic

Technical data:

Dimensions in mm (LxWxH)	3100 x 610 x 1705
Max. cable length before twist	2250 mm
Min. cable length before twist	400 mm



Info sign and core blank holder

Weblink

